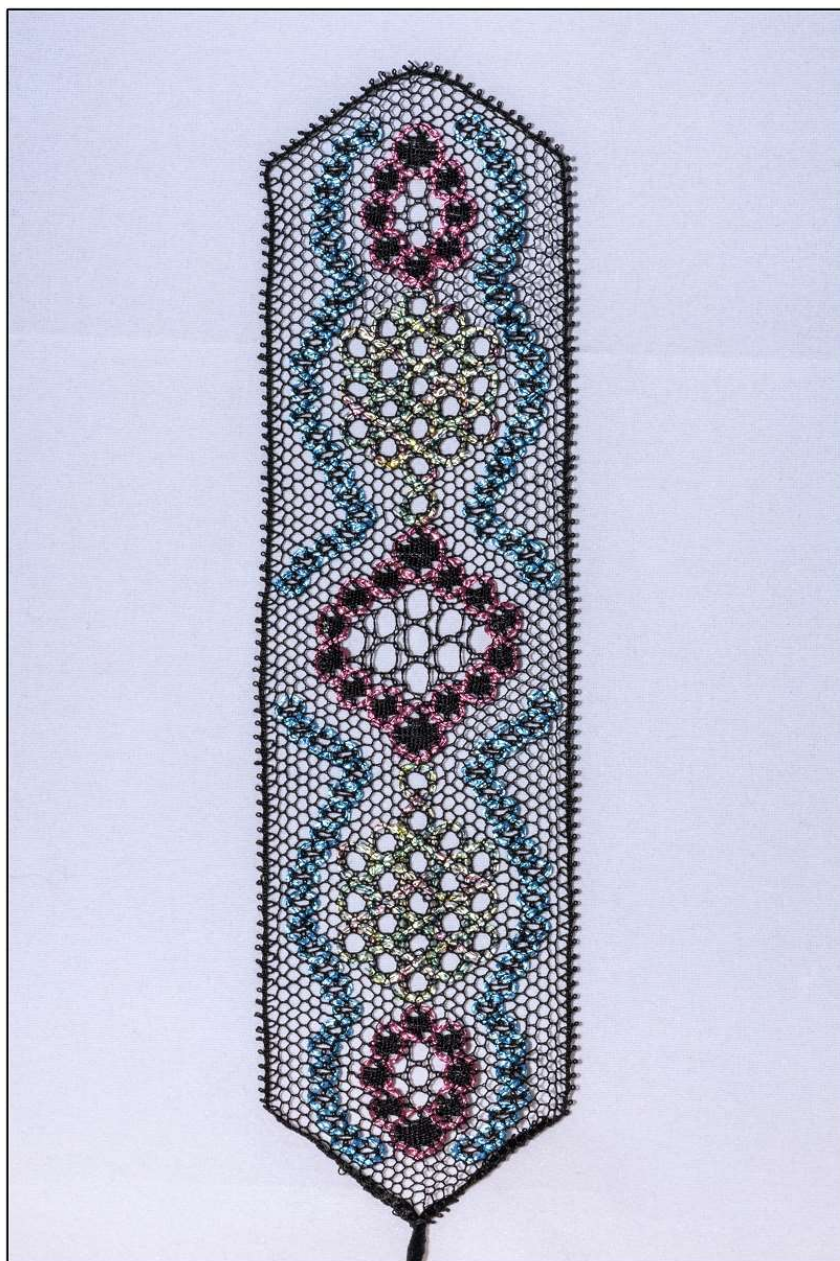
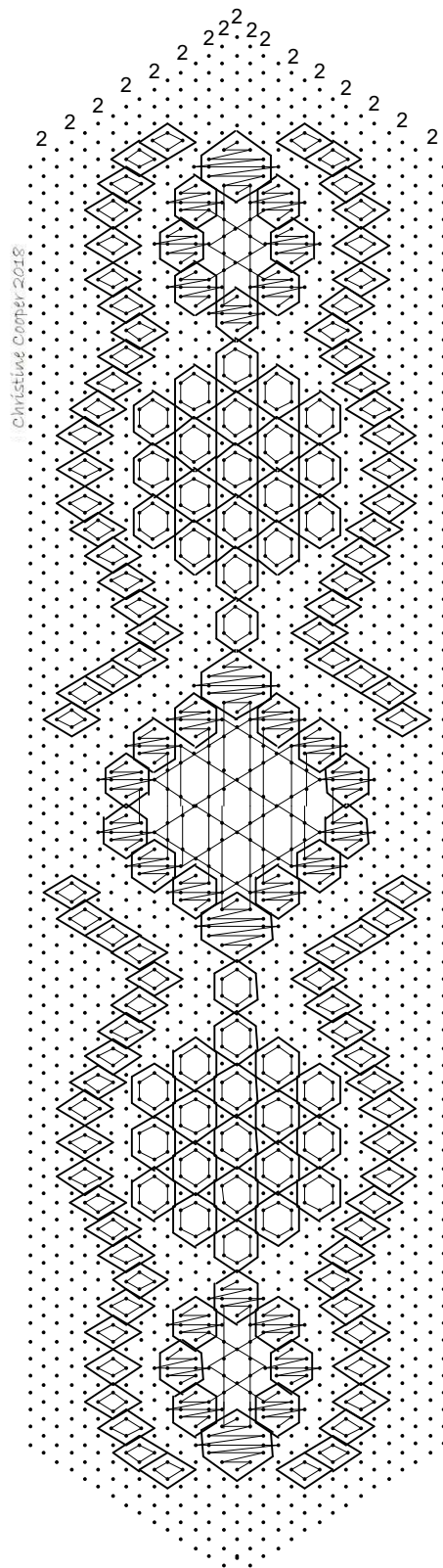


# **"Mary" Bookmark**

by Christine Cooper





© Christine Cooper 2018

You may make this pattern to sell for charity  
but not to sell for personal gain.

Pattern created in Ilseft Lace8.  
Printed at 2.2mm diagonal.  
Grid angle 58 degrees.

**You will need:**

DMC Broder Machine No.50 (Black)  
34 pairs (approx 1m/3ft on each bobbin).

Rainbow Gallery Goldrush 14  
in shades WG72C, 203C, and WG42C.

5 pairs gimp bobbins  
with 50cm/18" waste thread wound onto each.

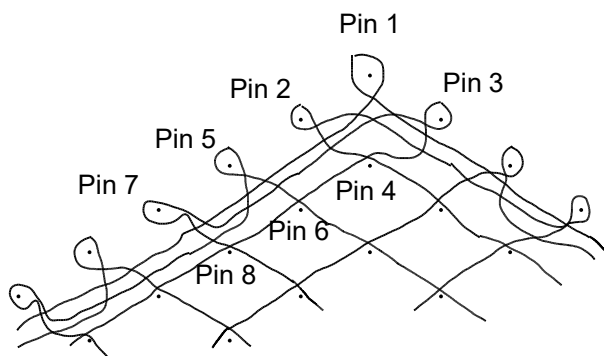
For top and bottom pink gimps, use about 40cm/15" gimp thread.  
Tie this thread onto the waste threads of a pair of gimp bobbins.

For centre pink gimps, use about 60cm/20".

For blue gimps, use about 1m/3ft.

For green gimps, use about 40cm/15".

(Alternative threads for gimps:  
Twilleys Goldfingering  
Anchor Artiste Metallic No.5)

**Starting the Pattern**

1 - Make a false picot at pin 1.

The resulting Right Hand pair becomes the outer edge pair for the right hand side of the bookmark.  
The Left Hand pair becomes the outer edge pair for the left hand side of the bookmark.

2 - Make another false picot at pin 2. The resulting RH pair becomes the inner edge pair for the RHS.

3 - Make another false picot at pin 3. The resulting LH pair becomes the inner edge pair for the LHS.

4 - Take the LH pair from pin 2 and the RH pair from pin 3, whole stitch them through their adjacent edge pairs, twist them 3 times, and then use them to make a point ground stitch at pin 4.

5 - Make a false picot at pin 5. Whole stitch the RH pair through the two edge pairs, twist 3 times, and make a point ground stitch at pin 6.

6 - Take the LH pair from pin 5 and whole stitch it through the two edge pairs.

7 - Take the inner edge pair, whole stitch it through the outer edge pair, make a picot at pin 7, then whole stitch it through the outer pair and the LH pair from pin 5 (which now becomes the new inner edge pair).

8 - The pair from the picot at pin 7 now makes a point ground stitch at pin 8.

Repeat steps 5-8 down the rest of the LHS diagonal.

Repeat again as mirror image down the RHS diagonal.

You will now have all bobbins in place, with two edge pairs running down each side.

### ***Gimps***

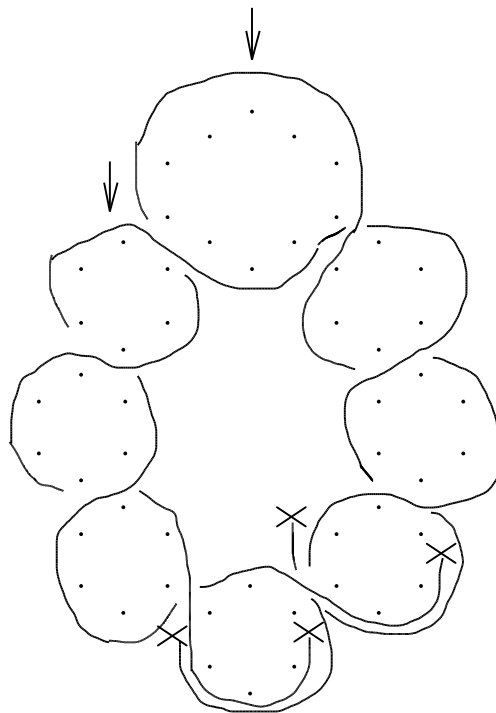
The pink gimp pattern requires two pairs, hung at the arrows below.

Cross gimps right over left.

To finish, overlap the threads through two black pairs and lay the bobbins to one side.

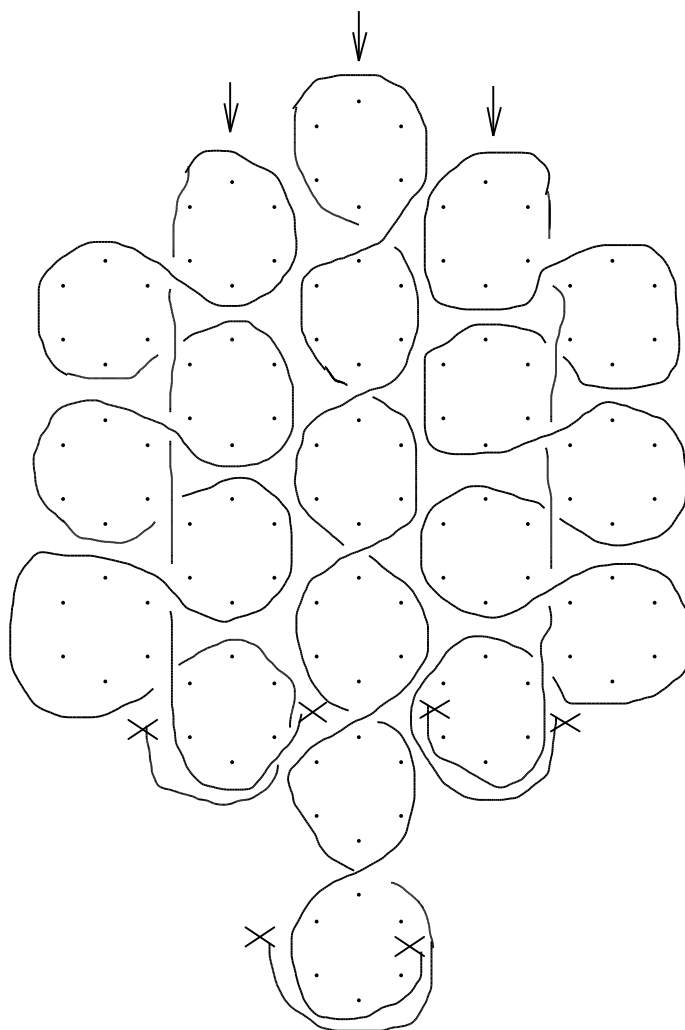
When a little more work has been done, these bobbins can be cut off, leaving 5cm/2" tails.

After completion, the tails can be trimmed close to the fabric.



Finish the blue and green gimps in the same way. No sewing in required!

Use 3 pairs for the green gimps as shown.



### ***Finishing the Bookmark***

When working down to the point, there is no need to work whole stitch through all the discarded pairs running down the edge.

You can work whole stitch through the innermost pair, then pass all but the outermost pair between the working pair as a bunch.

Work whole stitch through the outer pair, then the picot, then whole stitch through the outer pair again, and leave the working pair as part of the bunch.

If you find any mistakes in this leaflet, please do let me know.  
Constructive feedback is always welcome.

Happy lacemaking!

[bobbinlacemaking@gmail.com](mailto:bobbinlacemaking@gmail.com)